
WE ARE WHAT WE REPEATEDLY DO, EXCELLENCE THEN, IS NOT AN ACT, BUT A HABIT - (Aristotle)

Iverson Forest Management Inc. (IFMI) is a respected forestry consulting firm which has been operating in coastal B.C. for over 16 years, with offices located in Duncan and Campbell River. During this time, we have forged strong relationships with numerous government, industry and First Nations clients, as well as private landowners. We have close ties with a number of Associates in other professions which allow us to take on a diverse and interesting range of projects. Above all, we take pride in delivering quality services to our clients, in a safe and efficient manner. At the same time we believe in providing career development opportunities for our employees in a **fun, team oriented environment**. Visit <http://www.iversonforest.com> for more information. We offer **competitive wages, a comprehensive benefits package & opportunity for career advancement**.

We are currently looking to fill the following positions, based out of both our Duncan and Campbell River operations:

Intermediate & Junior Forest Engineers

Intermediate Forest Engineer (2 Positions) – You will assist our Senior Forest Engineers in all elements of cutblock and road development for both conventional and helicopter harvesting operations. Specific duties will include assisting with timber reconnaissance, cutblock boundary layout, road location, traversing, stream classification, collection of appraisal data, GPS surveys, bridge site plan surveys, traverse note entry and map building in RoadEng. You will also accompany professionals during field assessments (e.g. fish, terrain, and archaeologist). The position will require supervision of small crews and some client liaison. For those that choose to excel, these Intermediate Forest Engineer positions could evolve into Senior Engineering positions over time.

Junior Forest Engineers (4 Positions) – You will assist our Senior and Intermediate Forest Engineers. Duties include assisting with timber reconnaissance, boundary and road layout, traversing cutblocks/roads/streams, running deflection lines & analysis, tie lines and GPS surveys. Our Junior Forest Engineering positions give a solid grounding in practical forestry experience, and lay the foundation for advancement into Intermediate Forest Engineer positions.

The preferred candidates will possess the following qualifications:

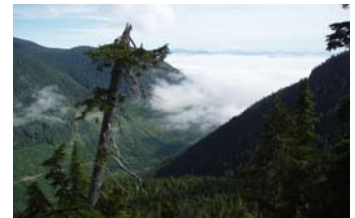
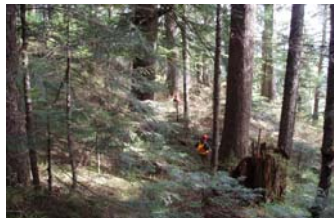
- Post-secondary degree or diploma in forestry or a minimum of 3 years (Intermediate) or 1 year (Junior) directly related experience in forest engineering. Registration (or eligibility for registration) with the ABCFP is an asset.
- Solid knowledge of RoadEng (Intermediate).
- Good working knowledge of forestry legislation and regulations in B.C. (e.g. FRPA, Forest Act etc.).
- Proficiency with computer software including Word and Excel.
- A valid BC drivers license.
- A commitment to maintain a high level of safety, efficiency and quality in all aspects of work.
- A desire for a fun, challenging and rewarding career.

We work in a dynamic environment, and camp work may be required for the above positions depending on client needs. **Preference will be given to those with forest engineering experience in coastal British Columbia**, although individuals with solid forest engineering experience from other areas of B.C. are invited to apply.

We would like to thank all applicants; however only those considered for an interview will be contacted.

Please forward your resume and a cover letter to:

Iverson Forest Management Inc.
Box 218
Duncan, BC, V9L 3X3
Fax: (250) 715-1153
bonnie@iversonforest.com



This posting will remain open until the positions are filled.
